



Considerations for the BSD Professional Certification Exam Lab Design

Jim Brown

BSDCG

jimbyg@gmail.com

jpb@sixshooter.v6.thrupoint.net

BSDP Lab Design

Topics

- Intro (Who/What/Why)
- Creating an Exam
- BSDP Exam Design
- BSDP Lab Design
- Discussion



Who/What/Why

- The BSD Certification Group exists to provide psychometrically valid exams for BSD system administrators.
- Incorporated in 2006, NJ, USA. Formal IRS status-501(c)6 a.k.a. “Business League”. Contributions are *not* tax deductible. We really, really tried... :-)
- BSDCG began in 2005; BSD Associate Exam released in 2008.
- BSD Professional Exam development finally (!) getting started in 2010.
- Other exams under consideration: pf, embedded systems, global enterprise.

BSDP Lab Design

\$\$\$?

- The “Why” - Sorry, we're not in it for the money :-)
- The BSD Certification Group survives on public donations, purchases of our custom DVDs, corporate sponsorships, and individual goodwill.
- By The Numbers:
 - **2007: Income: \$5,996 : Expenses: \$9,046 (Psych: 82%)**
 - **2008: Income: \$9,425 : Expenses: \$12,267 (Psych: 70%)**
 - **2009: Income: \$9,255 : Expenses: \$13,632 (Psych: 67%)**
- Fortunately, every year we have been able to meet our psychometric expenses.
- But it's only one way you can help!



BSDA Exam Design

- Psychometrician- Dr. Sandra Dolan
- Job Task Analysis for BSD SysAdmins
- Created Exam Objectives
- Created Exam Questions (SMEs for all BSDs)
- Exam Beta Period
- Anghoff Session – figuring percentages
- Set the Passing Score
- Launched!
- Ongoing Tracking and Modifications of the Exam

BSDP Lab Design

Why Psychometrics?

- A psychometrically valid exam represents the highest level of exam design excellence.
- Psychometric exam design is the right choice for professional settings and credentials.
- Future directions for BSDCG require psychometric exam design, and structured business design (ITIL, CoBIT).
- These are required for program accreditation by ANSI, ISO, and other standards bodies.





Creating the BSDP Exam

- A “Job Task Analysis” starts the process
- JTA attempts to determine what the job practitioner actually does
- A survey is used to identify “Frequently Performed” tasks and “Important Tasks”
- BSDP JTA completed in Nov. 2009, results published in Mar. 2010
- Psychometric Analysis is currently underway

BSDP JTA Results

- Participation by over 30 countries



BSDP Lab Design

BSDP JTA Results

- BSDP JTA Responder Demographics
 - Mostly male, 21-45
 - Employed with direct hands-on experience (over 70%)
 - Heavy users of BSD (88%) and quite familiar with BSD (86%)
 - Preferred a combination written and hands-on lab by 2 to 1 (65%)
- Many Good Comments (and some funny ones)



BSDP Exam Next Steps

- Create BSDP Exam Objectives Document
 - Effort already underway on wiki at:
bsdwiki.reedmedia.net/wiki
 - Please join us!
- Review with psychometrician
- Begin question development for written and activity development for lab
- Finalize with psychometrician



BSDP Lab Design

- BSDCG has been considering a “hands-on lab” for some time.
- Ideas have been drawn from several sources, notably CCIE.
- Everyone is encouraged to submit ideas and get involved.
- Not all ideas are workable for BSDCG, since we are a non-profit organization with limited resources.

BSDP Lab Design

- General idea is based on a lab booklet that outlines a set of real-world scenarios.
- Each scenario has one or more activities.
- Each activity has a point value.
- To pass, candidate must accumulate points.



BSDP Lab Requirements

- 1 – Lab must match the exam objectives.
- 2 – Lab must be proctored.
- 3 – Lab must be “low cost” to BSDCG, candidates, and proctors.
- 4 – Lab must be simple to set up, take down, and administer. Minimal baggage.



BSDP Lab Requirements

- 5 – Lab must focus on “services” not “software products”.
- 6 – Lab must be reliable. No SPoF at test time.
- 7 – Lab must be secure- before, during and after the exam.

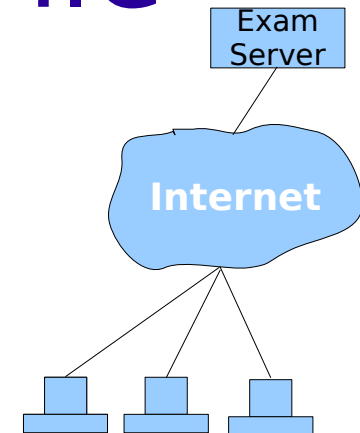


BSDP Lab Requirements

- 8 – Lab must be easy to score (i.e. scoring should be automated, similar to vulab).
- 9 – Lab must be doable anywhere- Internet access must not be required.
- 10 – Lab must not be predictable. (Can't preload test results or services.)
- 11 – Lab must be as close to real world requirements as possible.

BSDP Lab Ideas Pile

- Online “Virtual Lab” (proctored)
 - Nixes Req 6 (SPoF), Req 9 (doable anywhere)
 - While these are not a deal breaker, they are significant concerns.
 - If candidates pay money for exam and travel, it *must work*.
 - An online lab is subject to DDoS or network failure
 - Pearson/Vue nixes Req 3 (low cost)



BSDP Lab Ideas Pile

- BSDCG Owned Physical Lab Centers
 - Nixes Reqs 3 (low cost), 9 (doable anywhere)
 - BSDCG is not Cisco. We operate on a much lower budget.
 - Lab Centers are capital intensive, and only used for labs
 - Insurance alone might break this deal.



BSDP Lab Ideas Pile

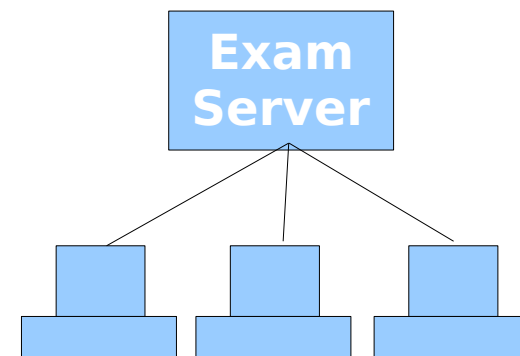
- BSDCG Leased Physical Lab Centers (ex. University)
 - Possible Solution!
 - Insurance, Proctoring, NDAs, and Test Material Security could be worked out.
 - Clashes with Reqs 3 (low cost), 9 (doable anywhere), but might be acceptable to the BSD community.



BSDP Lab Ideas Pile

- Single Server, Multiple X-sessions

- Very attractive,
but Nixes Req 3 (low cost),



Req 4 (min. baggage), and Req 6 (SpoF) if stolen, inoperable or delayed in transit

- Hardware required for 10 users is substantial.
- Hardware required makes it a tempting target for theft

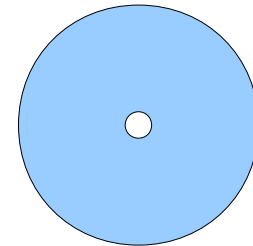
BSDP Lab Ideas Pile

- BSDCG Provided Laptops/Hardware
 - Nixes Req 3 (low cost), Req 4 (minimal baggage)
 - 10 laptops requires minimum 2 large cases with cables, power
 - Tempting targets for theft
 - Candidate may be used to foreign keyboard layouts



BSDP Lab Ideas Pile

- Live CD/DVD with the exam virtual environment
 - Live CDs don't use hard disks, but virtual machines require disk storage- this would come out of system memory, limiting size.
 - Limits the available kinds of activities that can be designed into exam
 - Can be slow
 - BIOS incompatibilities



BSDP Lab Ideas Pile

- Candidate provides laptop and uses BSDCG supplied USB hard drives containing a virtualized environment
 - Possible solution! Does not nix any requirement- USB hard drives are not too expensive or bulky.
 - Concerns about booting unknown USB hard drives give pause to candidates
 - BIOS incompatibilities may jinx the actual lab



BSDP Lab Ideas Pile

- Candidate provides laptop containing a pristine virtualized environment
 - Possible solution! Does not nix any requirement.
 - Concerns about preinstalled solutions (req. 10)
 - Concerns about test security (wireless)
 - Concerns about security of results (local copy)



BSDP Considerations

- Current Questions:
 - Should we require a BSDP candidate to provide a laptop for the test?
 - Can we trust what is already on the laptop not to interfere with the exam?
 - How can we keep the exam results secure?
 - What about wireless during exam?
 - Should Internet access be permitted or denied during the exam?

BSDP Considerations

- Current Questions:
 - If there is both a written exam and a lab, how does the candidate score if they pass the lab, but not the written?
 - Is passing the written a pre-requisite for taking the lab? What about where there is only a 'once-a-year' opportunity to take the exam?

BSDP Lab Prototype

- Example Scenario:

“You've just been hired as the senior system administrator for Example Corporation. There has been a major systems disaster and your boss, Mr. Big, demands that you immediately set up 3 new BSD systems and get the company back into operation as soon as possible.”





BSDP Lab Prototype

Mr. Big wants you to perform the following:

1. Install a new BSD development server according to a detailed specification for disk layout and user accounts
2. Install a second new BSD server, recreate the lost services (Web and FTP) according to further detailed specifications
3. Setup a third new BSD backup system with data synchronization for FTP, Web data, and development server directories according to a third specification. This server also provides DNS.



BSDP Lab Prototype

1. Filesystem Layout for all Servers

- /=500M
- /opt=300M
- /tmp=1G,
- /var=300M,
- /usr (remaining)

1.5 User Accounts

- 30 accounts as “usern_{nnn}”
- users 0-15 in “staff” group, rest in “devel” group
- users 0-3 also in wheel group



BSDP Lab Prototype

2.0 DNS Setup

- `www.example.net` 10.10.10.10
- `ns01.example.net` 10.10.10.5
- `devel.example.net` 10.10.10.20
- alias ftp to www
- Make `devel.example.net` mail server (priority 20)
- DNS is authoritative forward and reverse
- ns01 is master, devel is slave

2.1 Web Server Setup

- Document Root in `/usr/local/www`

2.2 FTP Setup

- Based in `/usr/local/ftp` (chroot not required)

BSDP Lab Design



BSDP Lab Prototype

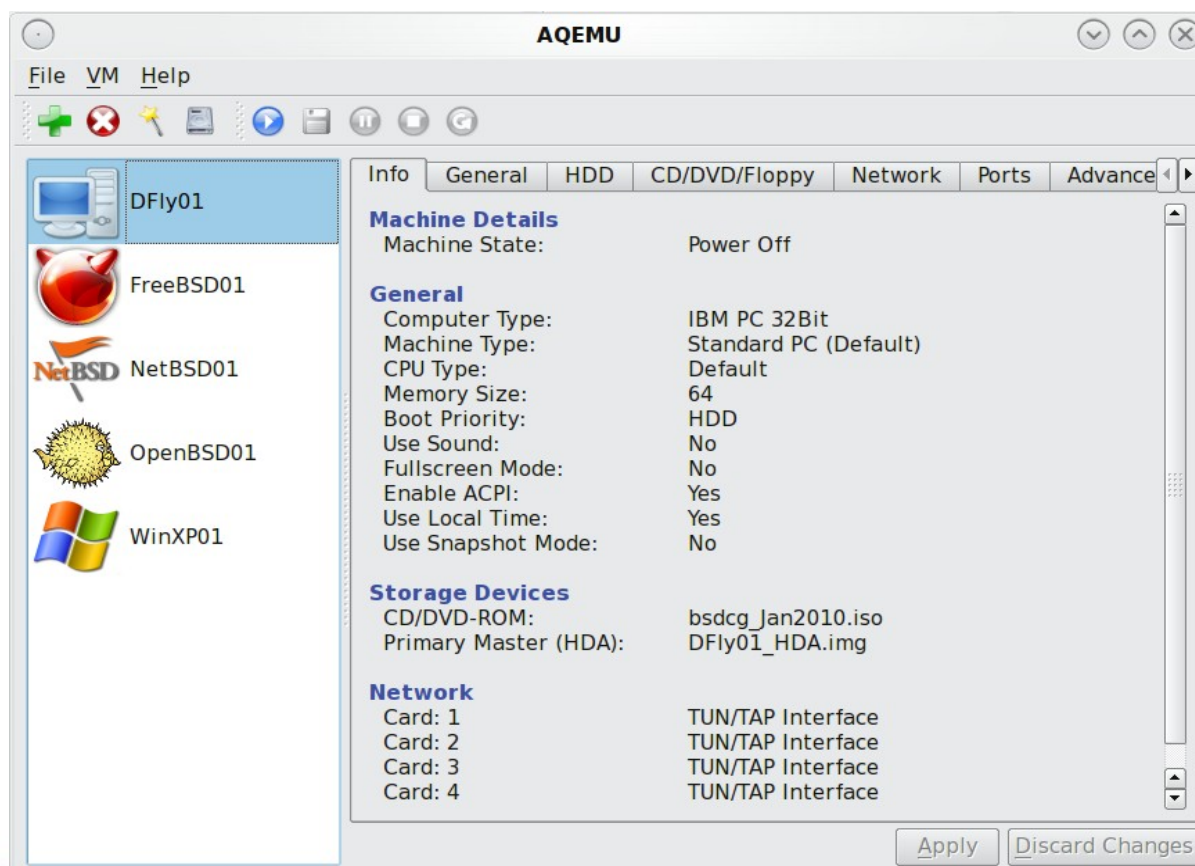
3.0 Synchronize servers to backup server every 5 minutes.

- Synchronize `www.example.net /usr/local/www` to `/usr/backup/www` on backup server.
- Synchronize `ftp.example.net /usr/local/ftp` to `/usr/backup/ftp` on backup server.
- Synchronize `devel.example.net` user directories to `/usr/backup/develusers` on backup server.

BSDP Lab Demo

Example Platform

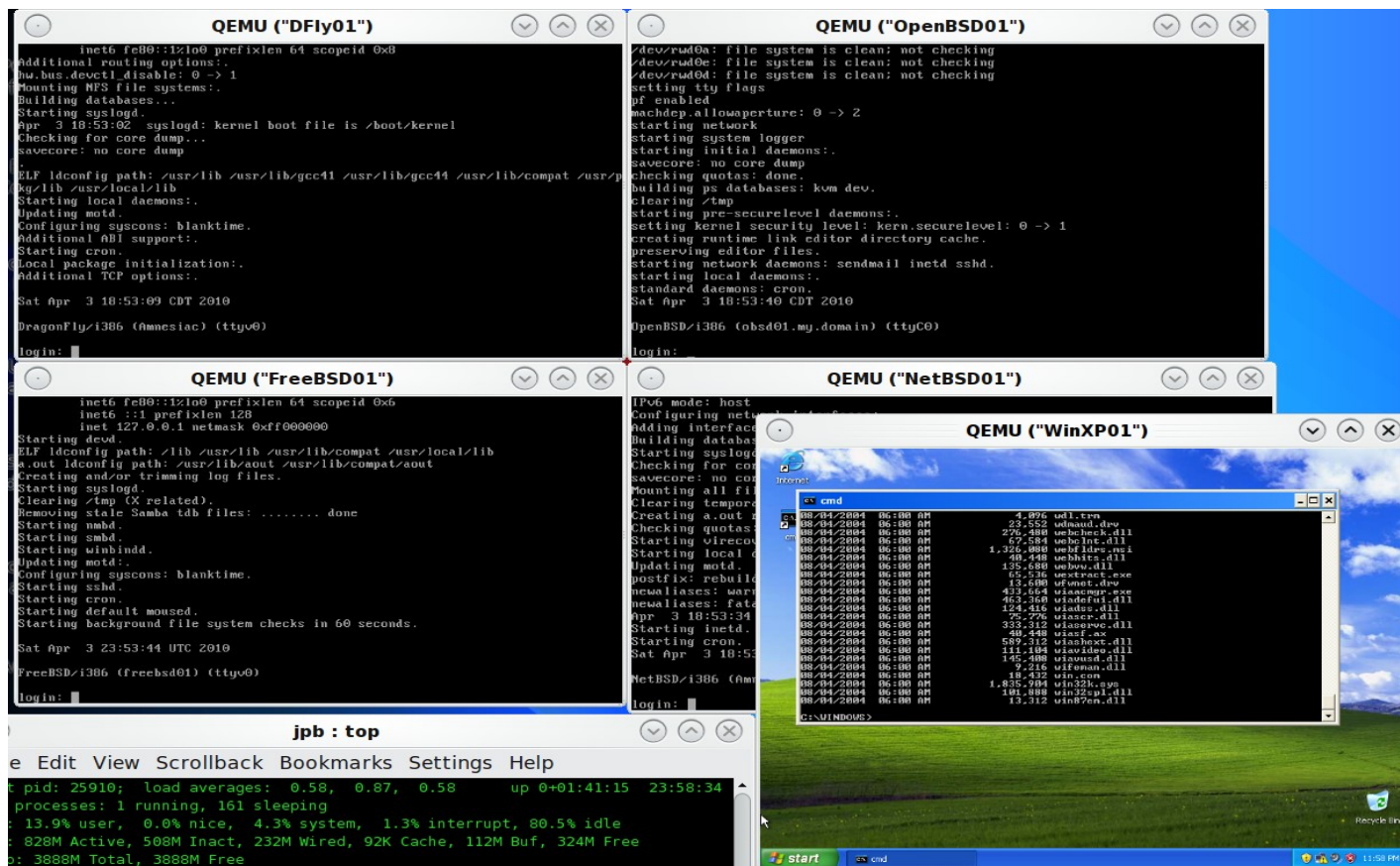
- AQEMU with pre-loaded BSDs and one Windows XP host (properly licensed)



BSDP Lab Demo

Resizable

- PC-BSD host can resize VM windows – even WinXP window

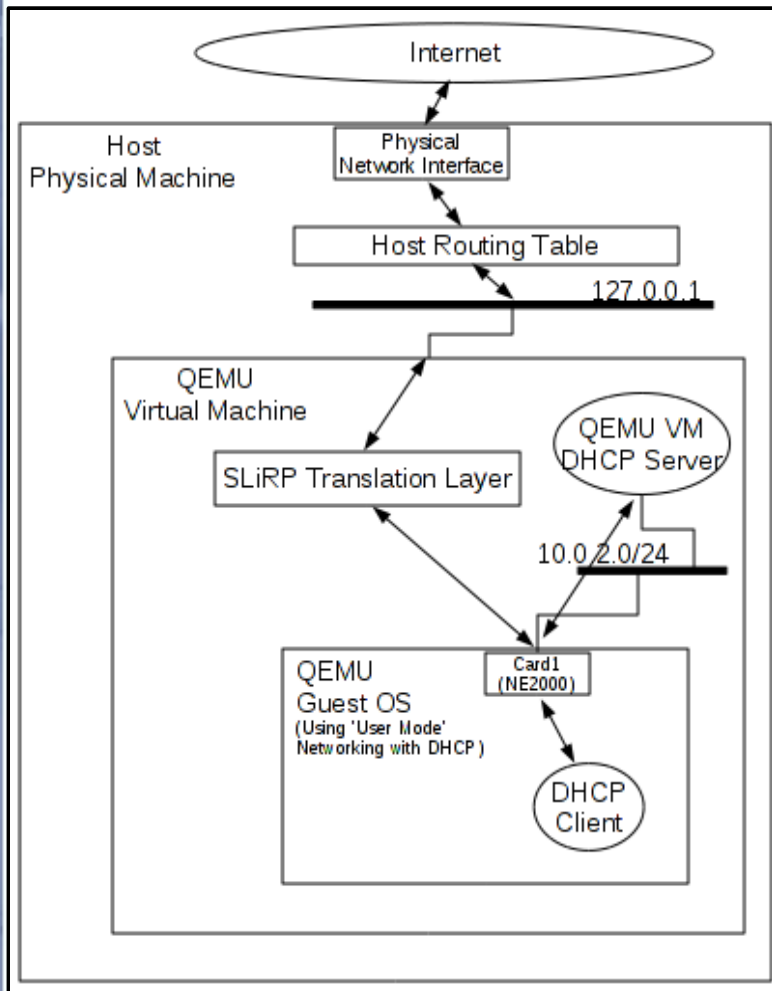


BSDP Lab Demo

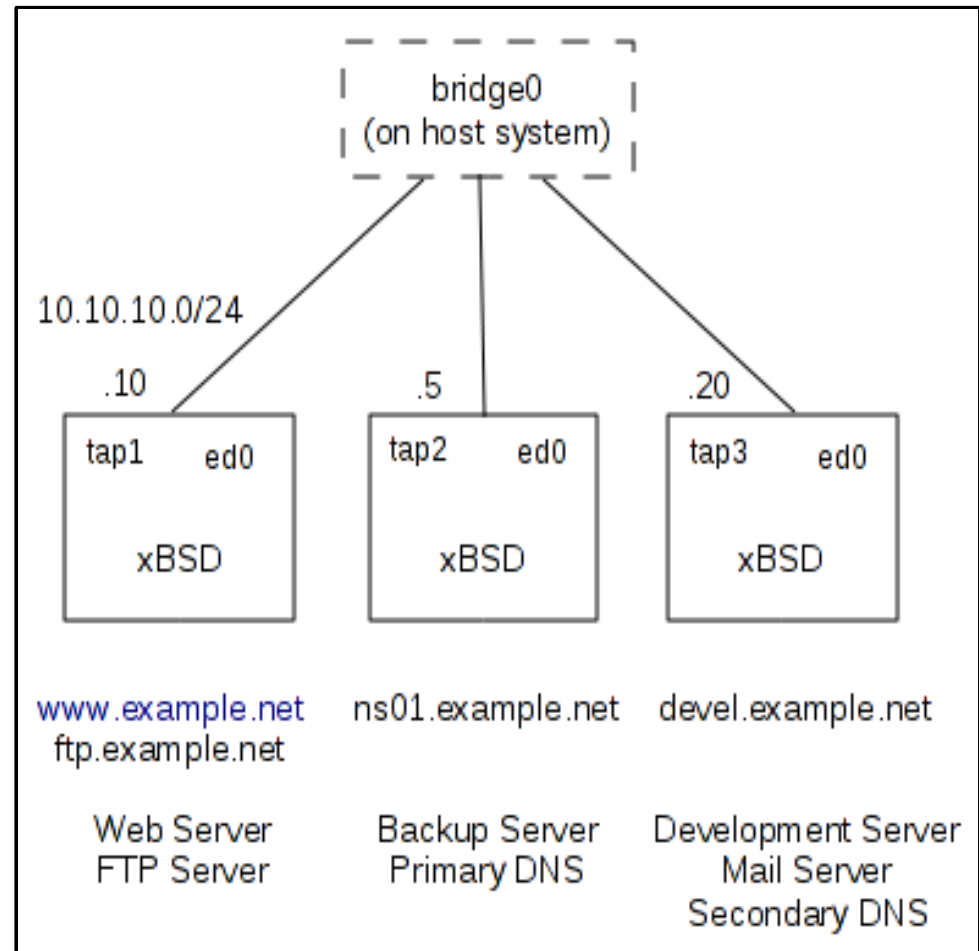
QEMU Networking

- Default “user mode” networking gets a DHCP address from an *internal* DHCP server and routes packets through the host external interface. Note that ICMP to external addresses does not work in this mode.
- “TUN/TAP” mode uses BSD tap interface for opening a network connection through the host. Combined with `if_bridge(4)`, packets can be routed between virtual machines. ICMP works between VMs and to/from the Internet.

BSDP Lab Demo



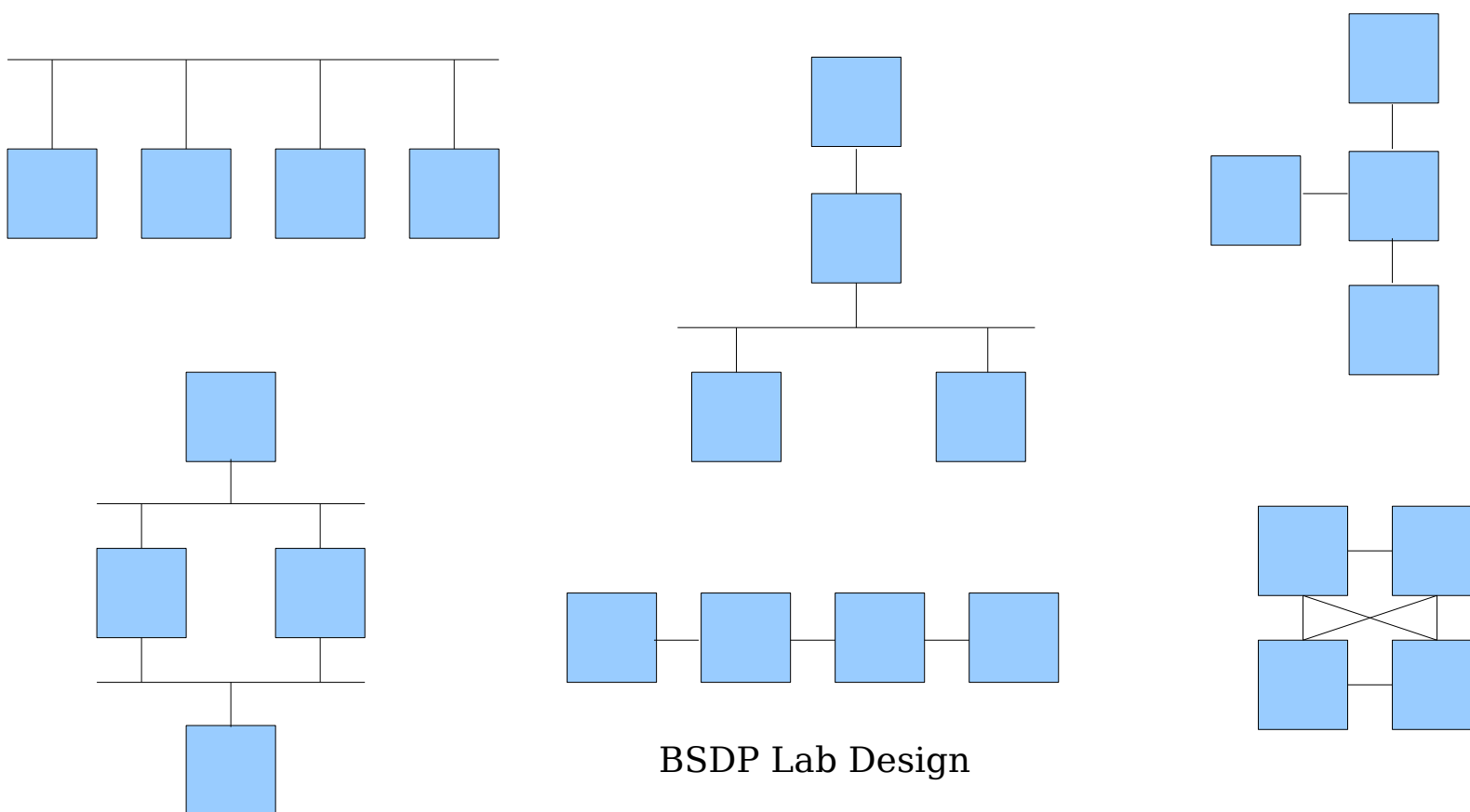
QEMU User mode networking



QEMU TUN/TAP mode networking

BSDP Lab Possibilities

- 4 virtual machines offers many interesting networking and administration possibilities:



BSDP Lab Design



BSDP Lab Conclusions

- There is nothing like “hands-on experience”, especially when the chips are down.
- The BSDP Lab is intended to validate “hands-on experience”.
- Virtualization is an attractive possibility for the BSDP Lab.
- High quality Open Source virtualization tools are now available, enabling the BSDCG to offer the Lab at substantial cost saving.
- A lot of work remains to be done.



Comments/Questions

Comments

and

Questions?

Contact:

jimbyg@gmail.com

info@bsdcertification.org

BSDP Lab Design



Thank You!



BSDP Lab Design